



Installation instructions
Audi S3 / RS3 8P

Dear customers,

the installation of the control at the Audi S3 / RS3 8P is in many parts

Identical with the installation at the VW Golf 6R.

So you will find in this manual some pictures that show the VW Golf 6R, should the situation be optically different at the S3 / RS3 8P we would of course be pleased to get pictures and information to perform the installation instructions even more accurate.

Start situation:



Remove trunk floor and foam components:





Remove the side trim, there are screws at the red marked points and clips at the blue marked points.



Here you can see the side panel from the inside.



If an original bass-box is installed the bass-box must also be removed.



Unscrew the wheelhouse rear left so it can be bent to the side (5 screws, Torx 25; best lift rear left with the jack):



Turn wheel housing to the side:



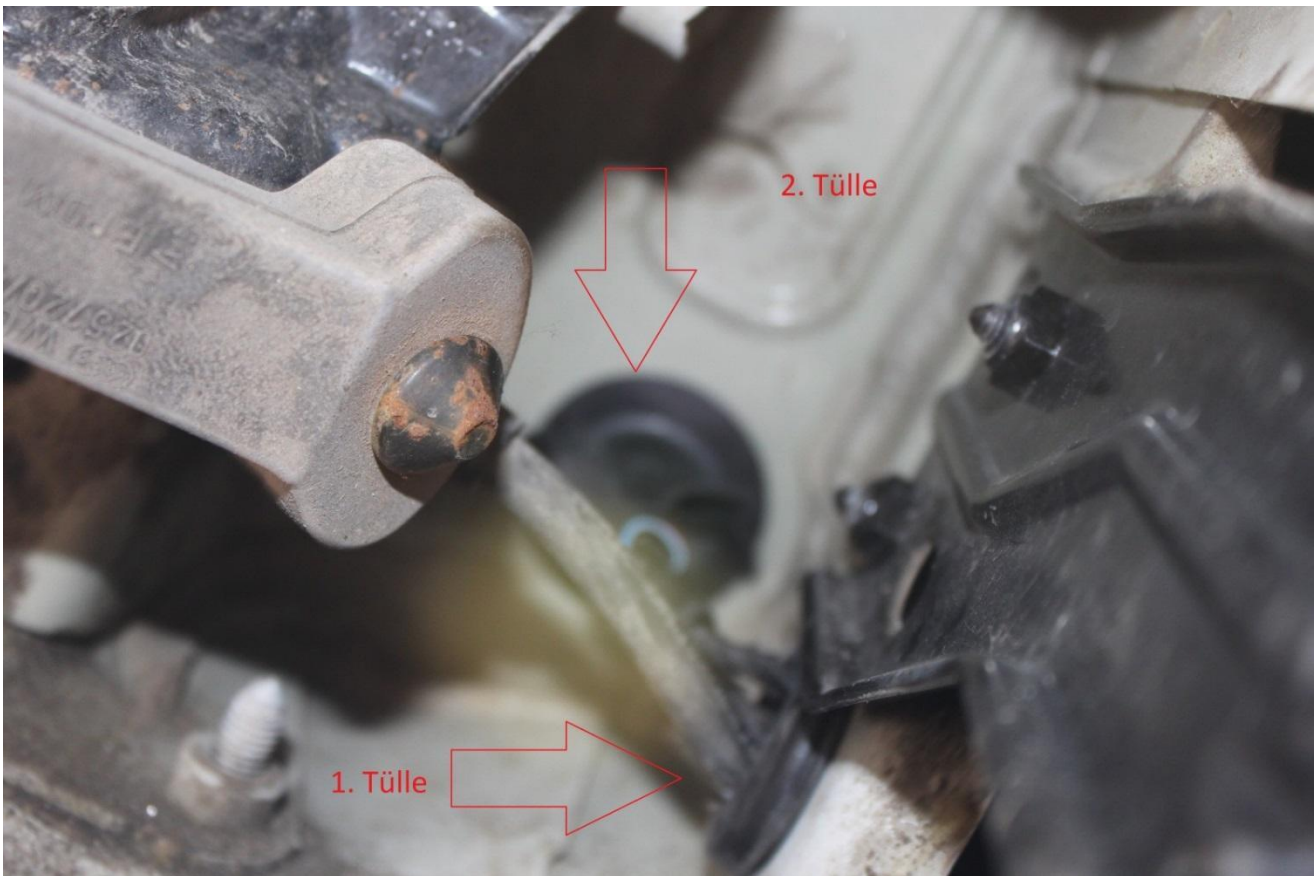
Unscrew the two nuts (13mm):



Bring out the vacuum accumulator including solenoid valve slightly and remove the plug:



Put the two connectors of the control system through these rubber grommets to the solenoid (wide the 2. rubber with a large screwdriver) 1. rubber = direction solenoid, 2. rubber = direction of the interior):



The connectors can be put more easy through the rubber if you take the rubber out. Then connect the connectors to the solenoid valve and the original connector.



The rubber grommet from the inside:



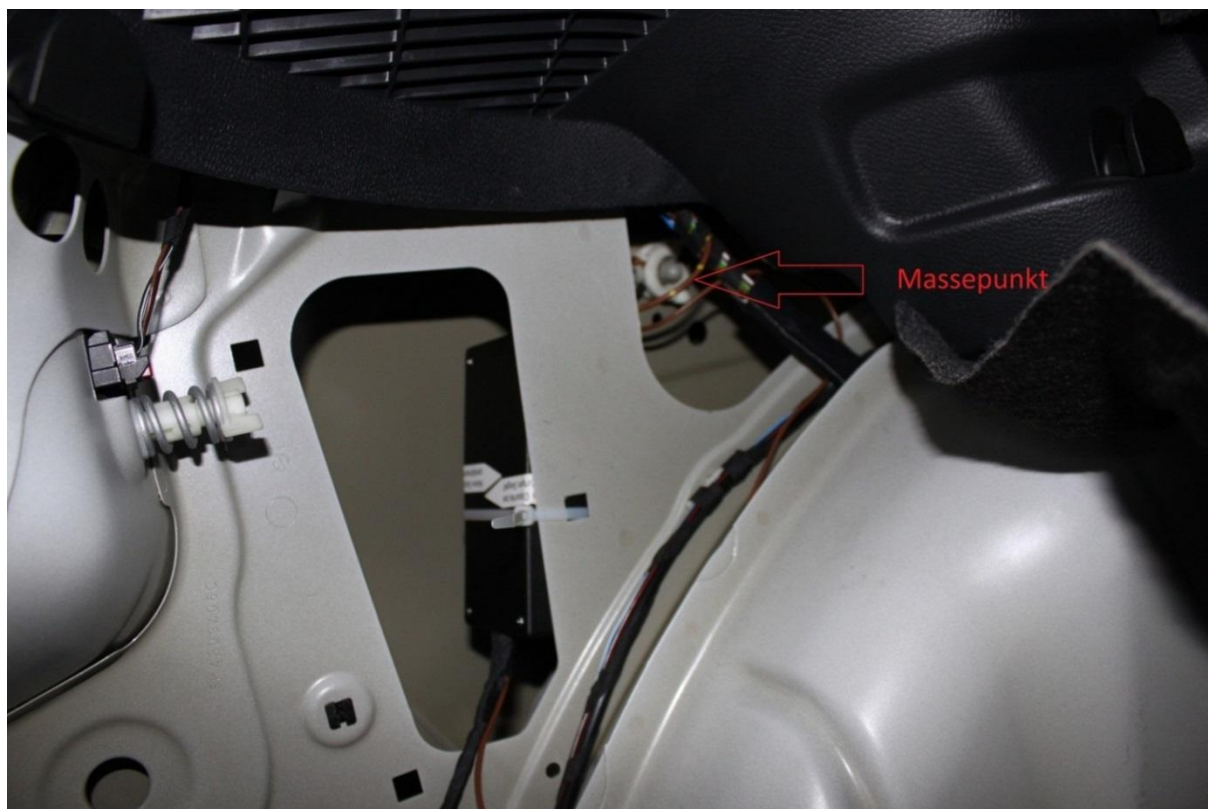
Attach vacuum accumulator including solenoid valve with the two nuts.



Wheelhouse tighten again:



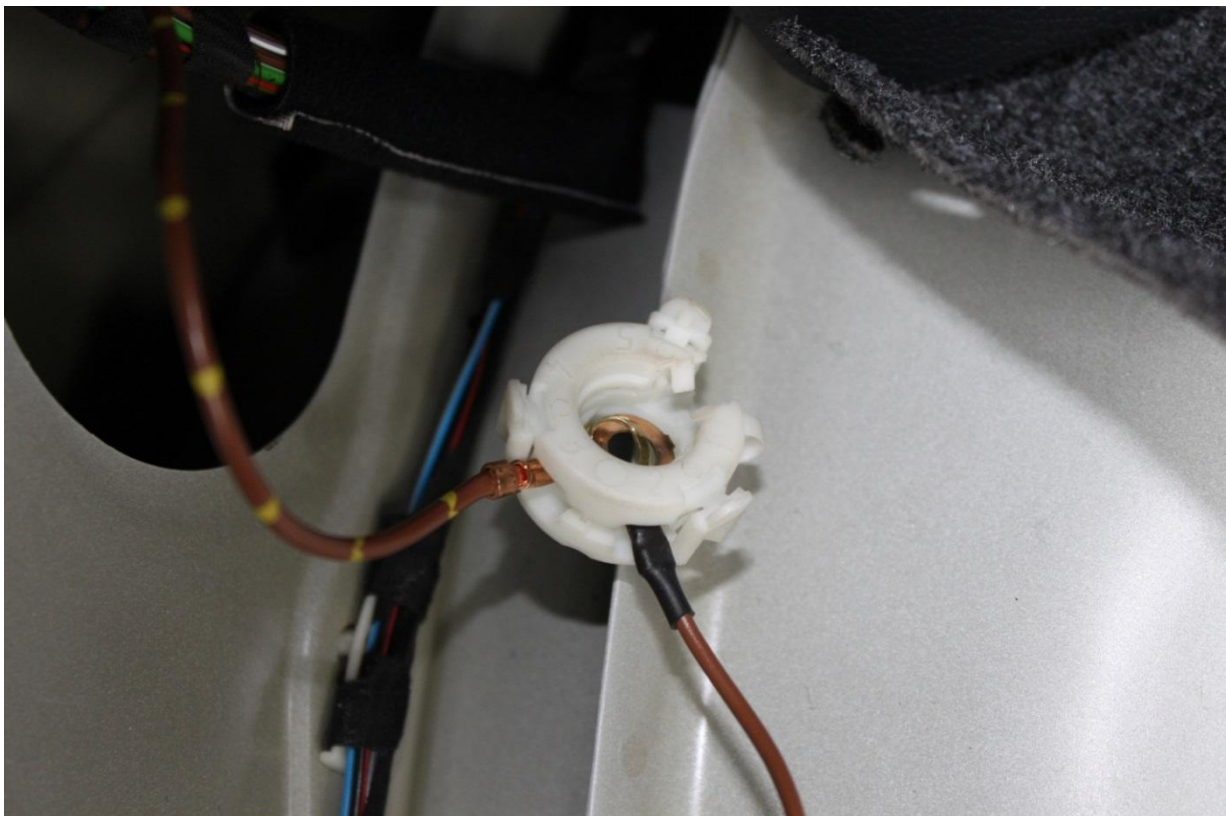
Fix the control system with cable ties in the wheel housing and ground cable (brown) to ground point (10mm nut).
(Attention: trunk door can no longer be opened when the ground point is unscrewed !!):



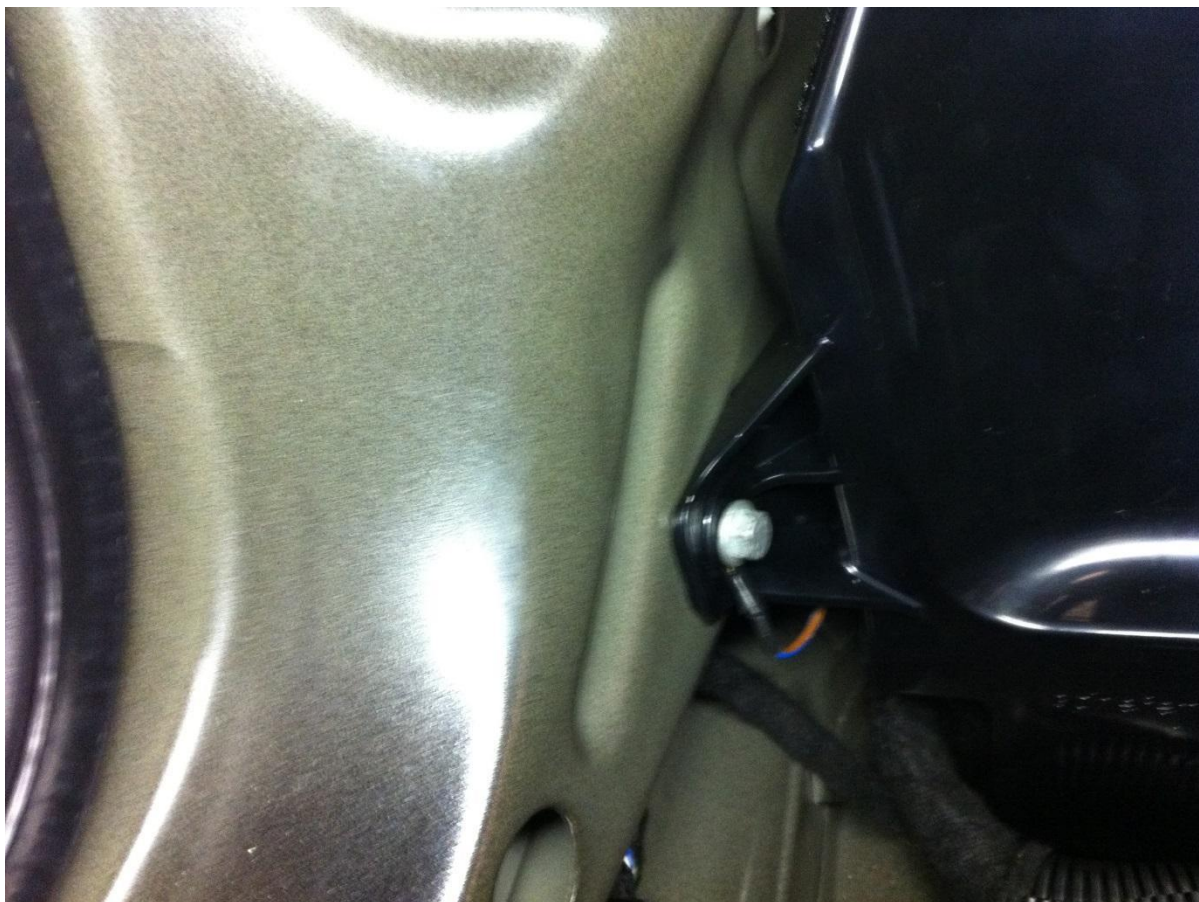
At the following picture our customer wrapped the control system with extra padding foil to avoid clatter.



Clip the plastic from the ground point, add additional eyelet and screw again:



Alternative the eyelet can be screwed at a different point like on the screw of the bass box holder for example.



Assemble interior again and test control system.

PLEASE NOTE: The exhaust flap maybe original ALWAYS open when the car is standing, a test of the "duration" function is only possible when driving. At best, the difference in holding the throttle or low acceleration in the range 3,000 to 4,000 1 / min can be heard.

Tools required (+ large screwdriver to widen the rubber):





Owner: Christian Müller

Vorstadt 15

94577 Winzer

Germany

Phone: +49 (0) 9901 200981

Fax: +49 (0) 9901 200983

www.special-exhaust.de

info@special-exhaust.de